

**VITROMEX<sup>®</sup>**  
MY PLACE, MY WORLD



**BROOKLYN** GLAZED CERAMIC WALL

# Brooklyn

## Glossy

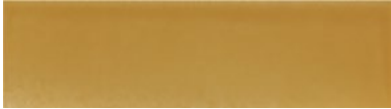
Carmín



Olivo



Mostaza



Azul



Blanco



Gris



Moka



Hueso



## Matte

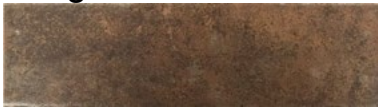
Óxido



Terra



Fuego



Gris



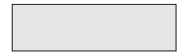
### Available Sizes & Trim

Wall



3"x10"  
(2 3/4"x 9 7/8")

Bullnose



3"x10"  
(2 3/4"x 9 7/8")

### Packaging Information

|                | 3"x10"   |
|----------------|----------|
| Pieces/carton  | 24       |
| Cartons/pallet | 112      |
| Sq.Ft./carton  | 4.52     |
| Lbs/piece      | 0.57     |
| Lbs/carton     | 13.76    |
| Lbs/pallet     | 1,643.19 |

### Technical information

Medium-heavy medium residential / commercial traffic



|        | Shade and Textures | Abrasion Resistance                           | Dynamic coefficient of friction | Minimum Grout | Break Strength      | Chemical Resistance | Water Absorption   | Glaze Hardness EN-101 UNE 67-101 |
|--------|--------------------|---|---------------------------------|---------------|---------------------|---------------------|--------------------|----------------------------------|
| Glossy | I                  | II CARMIN, OLIVO, AZUL<br>III MOSTAZA, BLANCO | >0.40  (A137.1-2012)            | 0.08" (5/64") | >250 lbf ASTM C-648 | Resistant           | 7 - 18% ASTM C-373 | 5                                |
| Matte  | III                | III   | >0.50  (A137.1-2012)            | 0.08" (5/64") | >250 lbf ASTM C-648 | Resistant           | 7 - 18% ASTM C-373 | 6                                |

